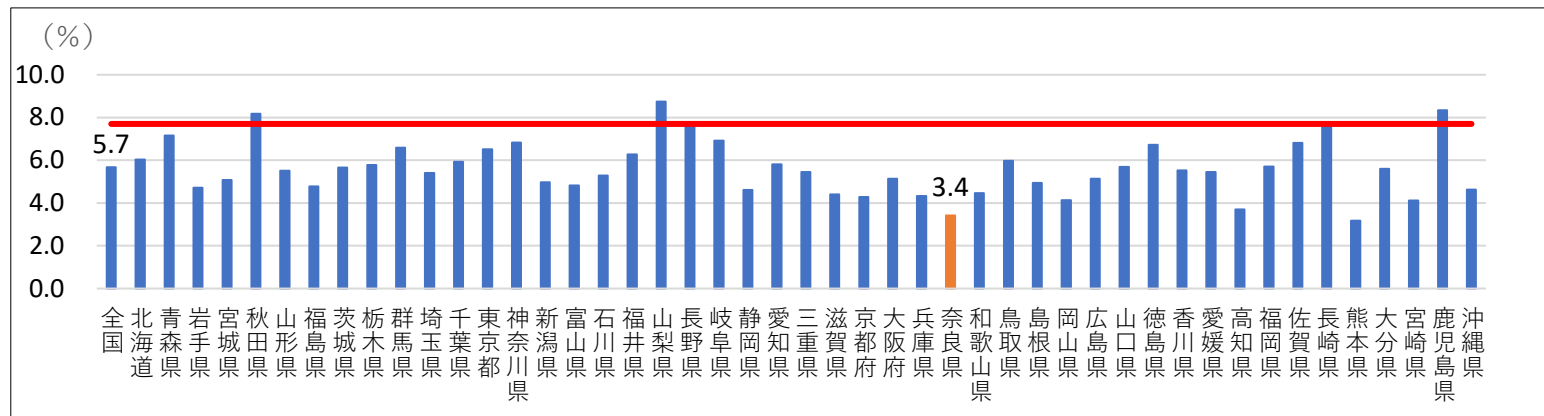
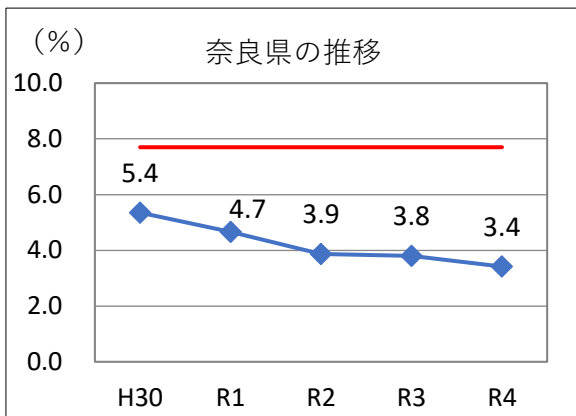
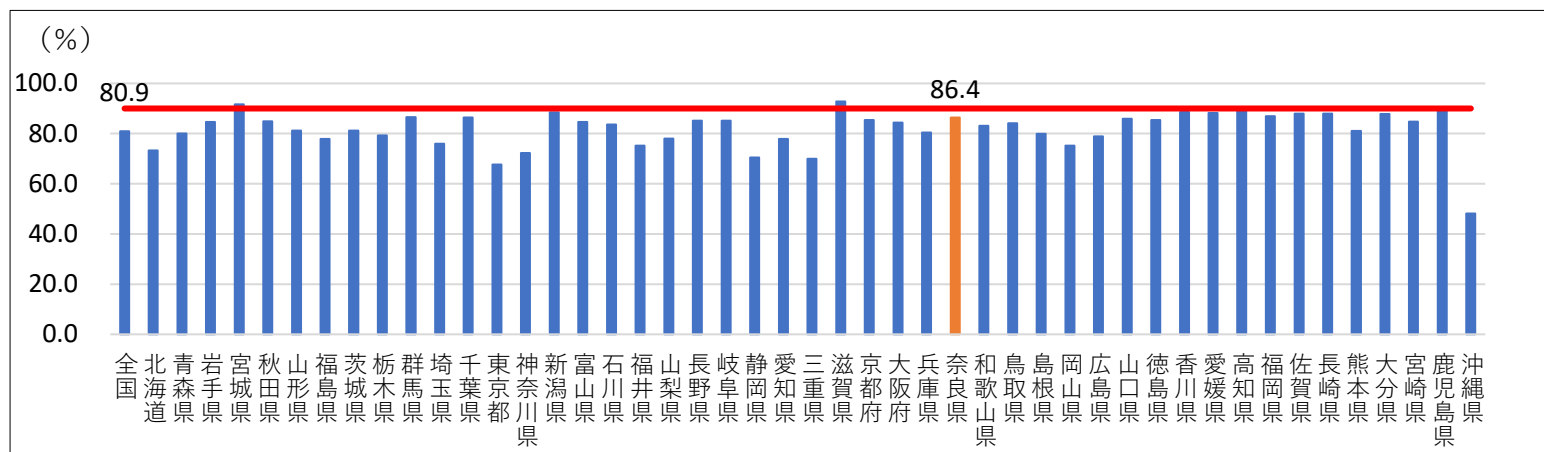
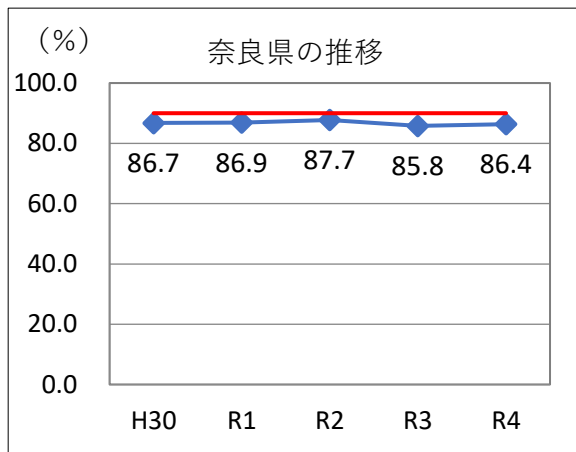


◆胃がん検診（X線）プロセス指標

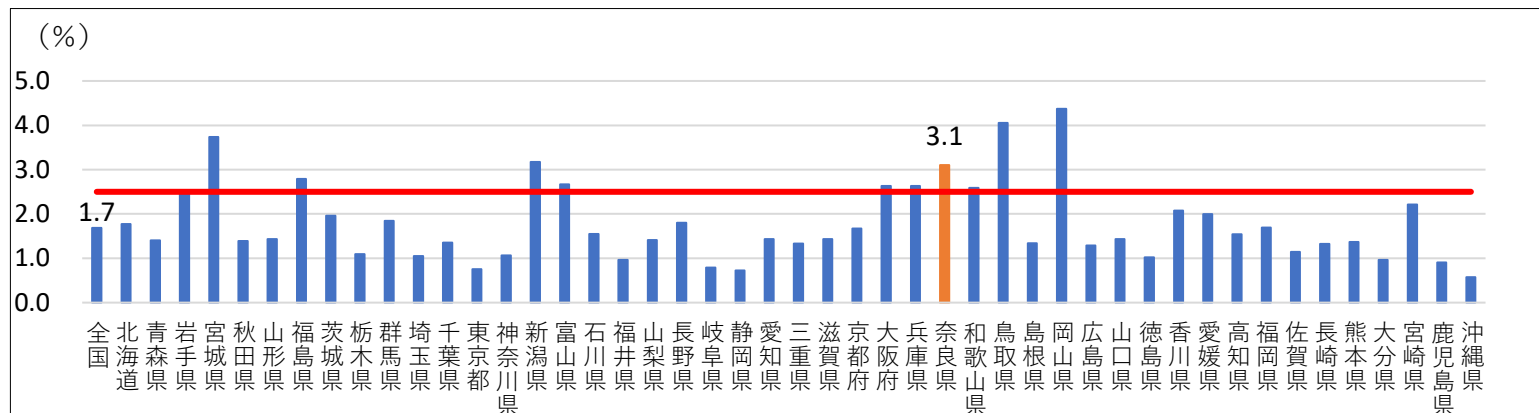
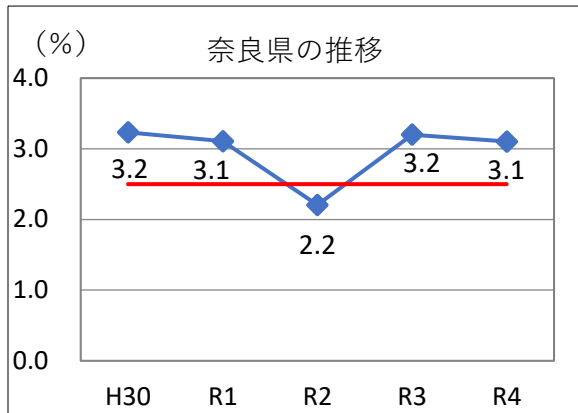
【要精検率（全住民50～74歳）】基準値7.7%以下



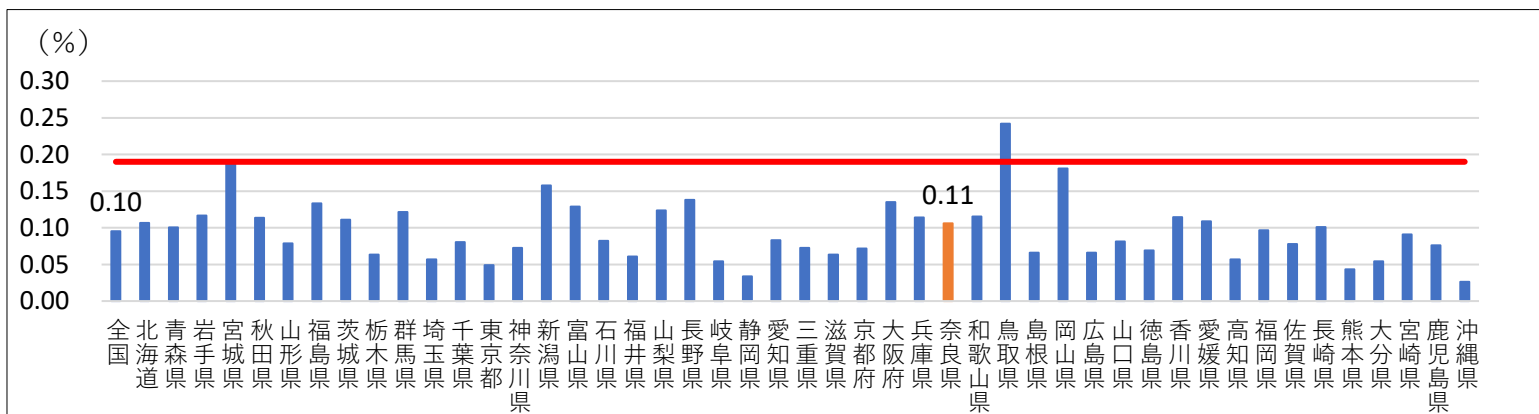
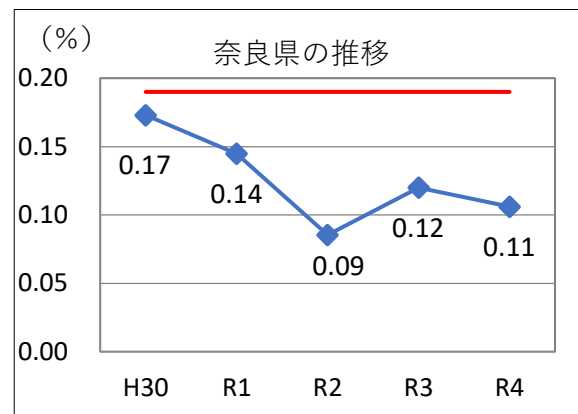
【精検受診率（全住民50～74歳）】基準値90%以上



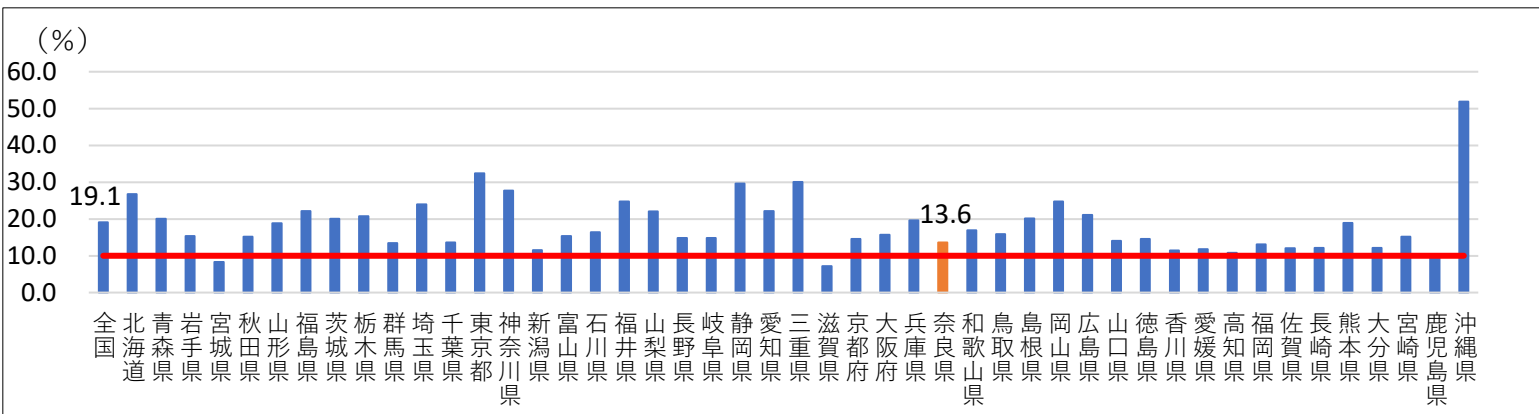
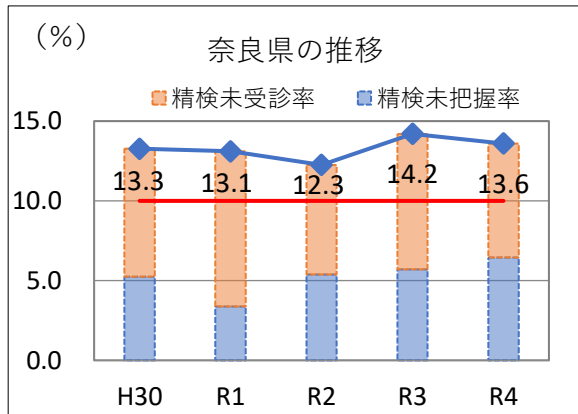
【陽性反応適中度（全住民50～74歳）】基準値2.5%以上



【がん発見率（全住民50～74歳）】基準値0.19%以上

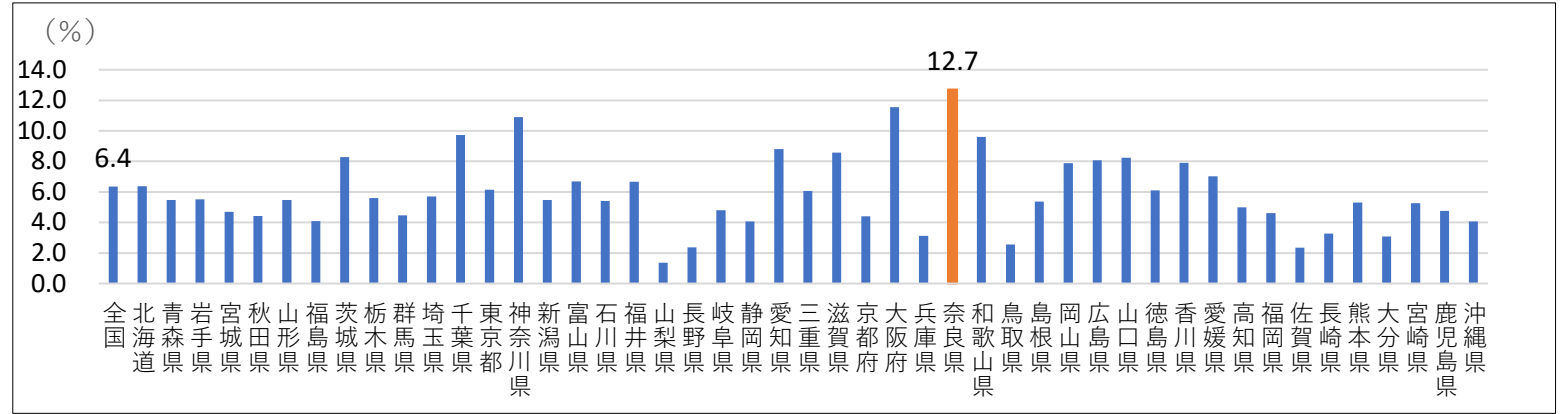
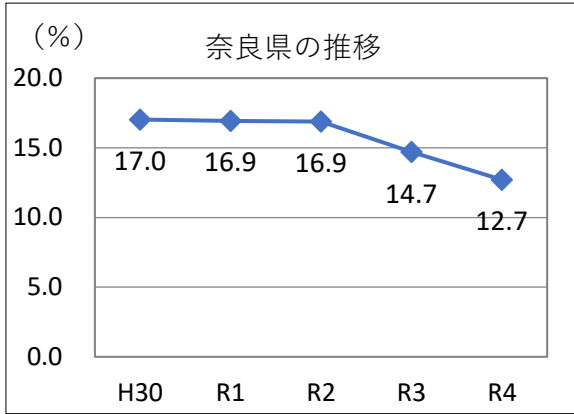


【精検未受診率+精検未把握率（全住民50～74歳）】基準値10%未満

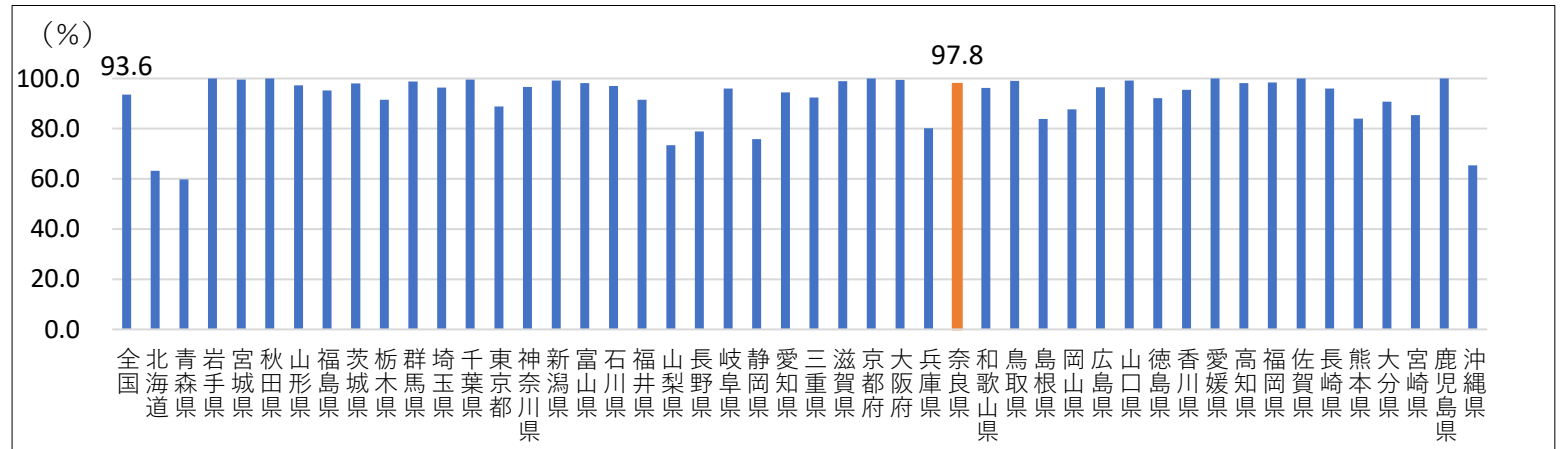
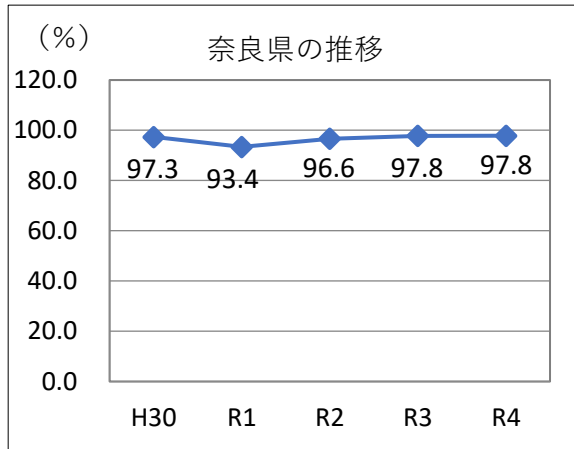


◆胃がん検診（内視鏡）プロセス指標

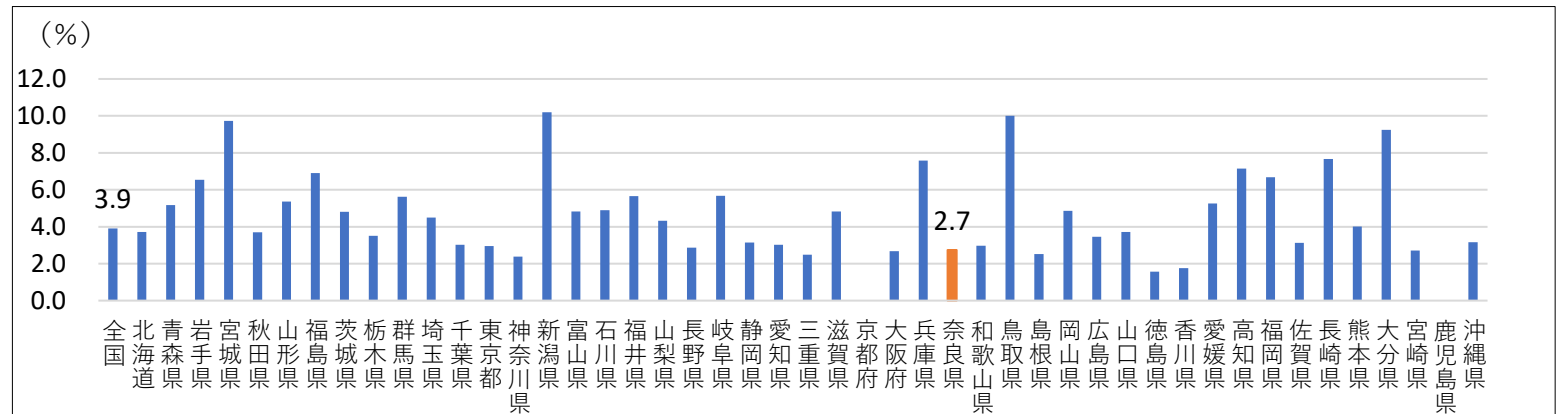
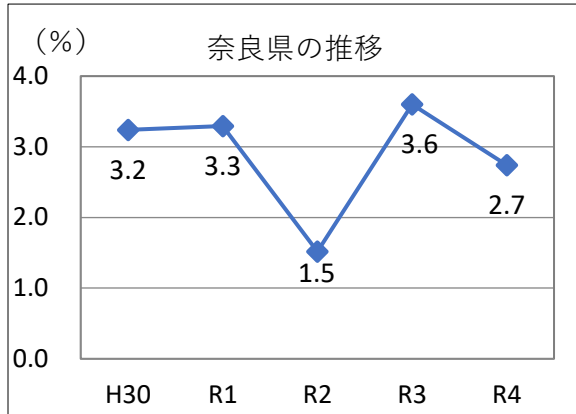
【要精検率（全住民50～74歳）】



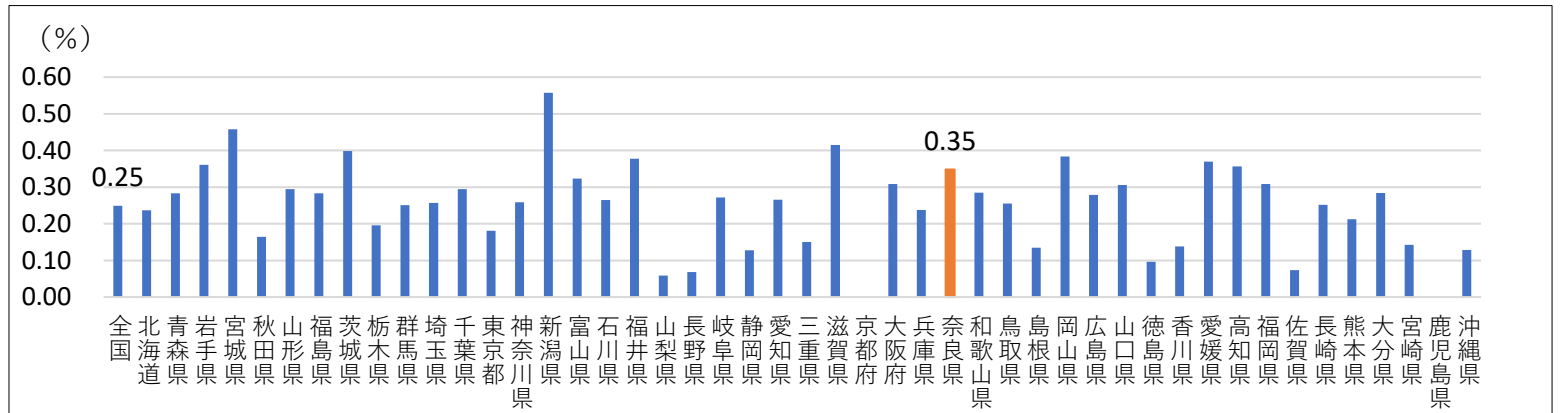
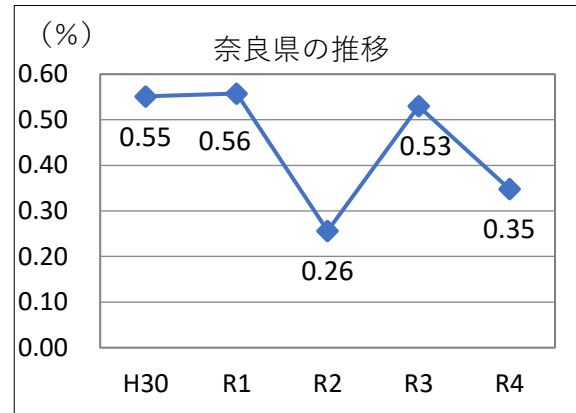
【精検受診率（全住民50～74歳）】



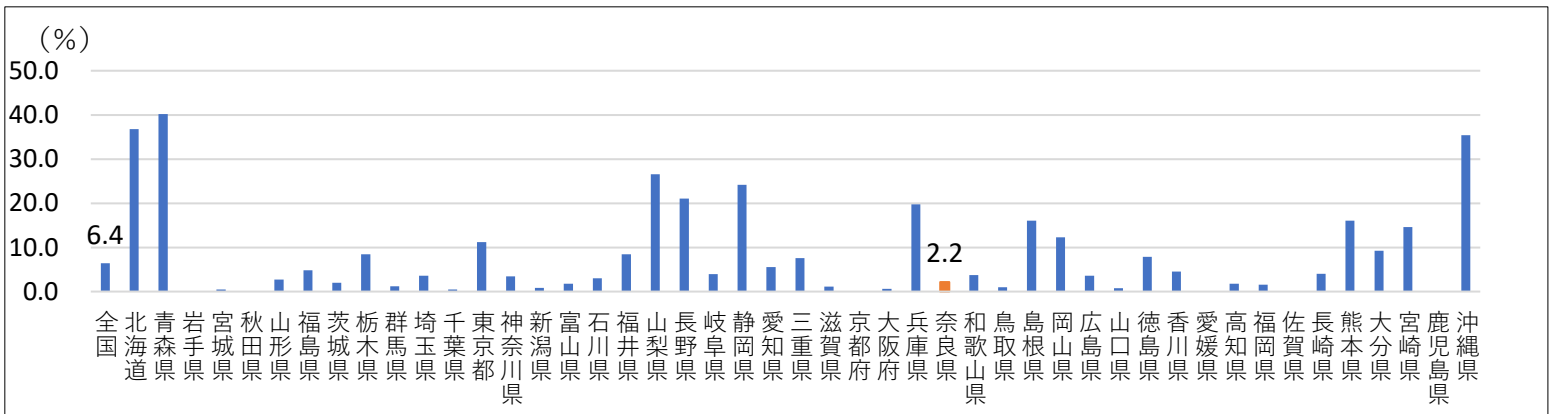
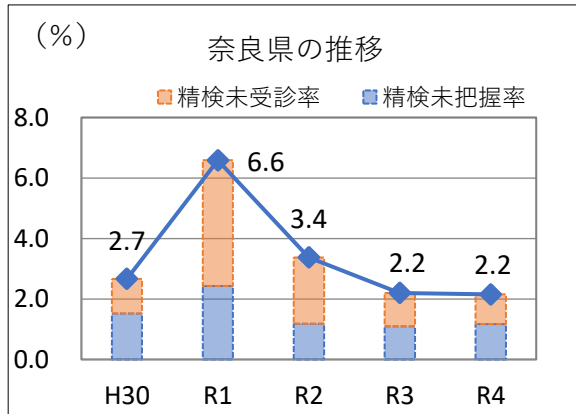
【陽性反応適中度（全住民50～74歳）】



【がん発見率（全住民50～74歳）】

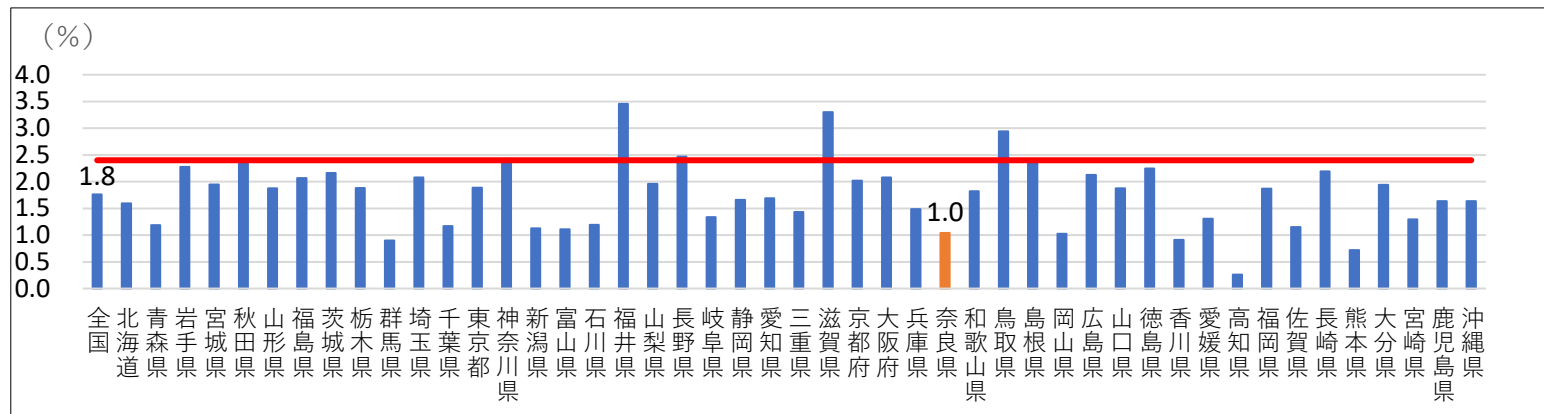
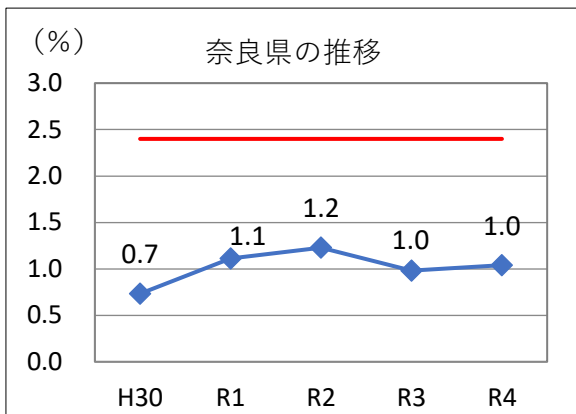


【精検未受診率+精検未把握率（全住民50～74歳）】

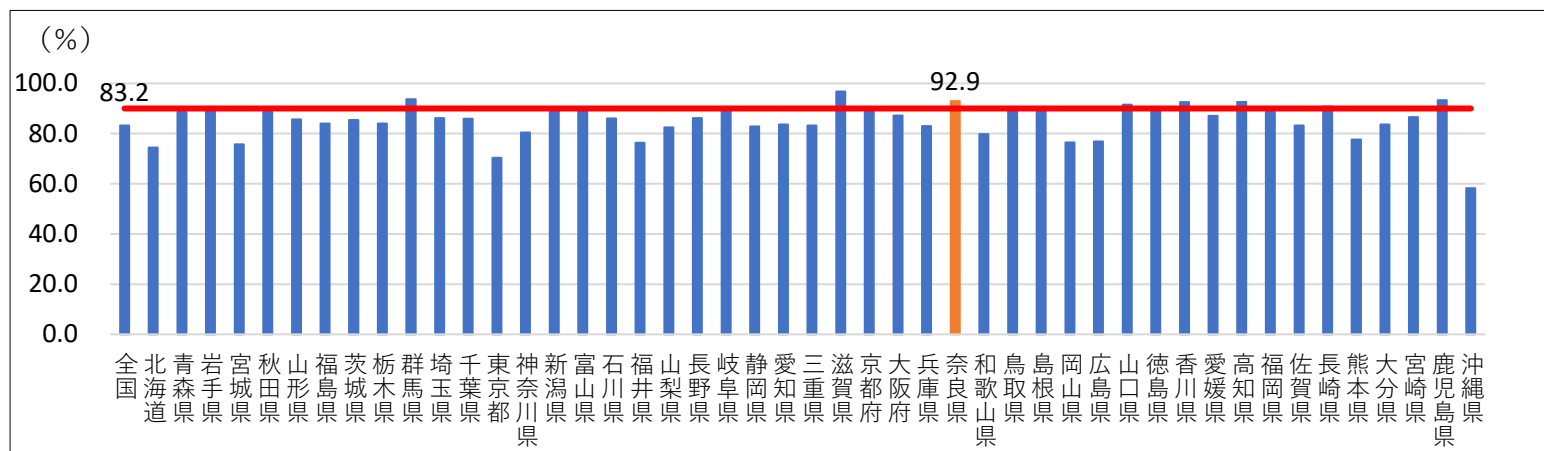
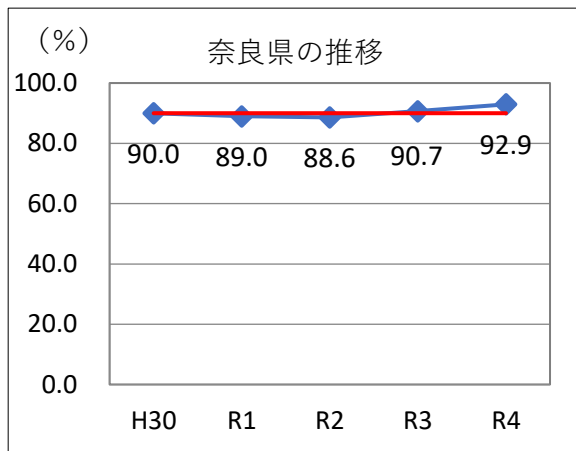


◆肺がん検診プロセス指標

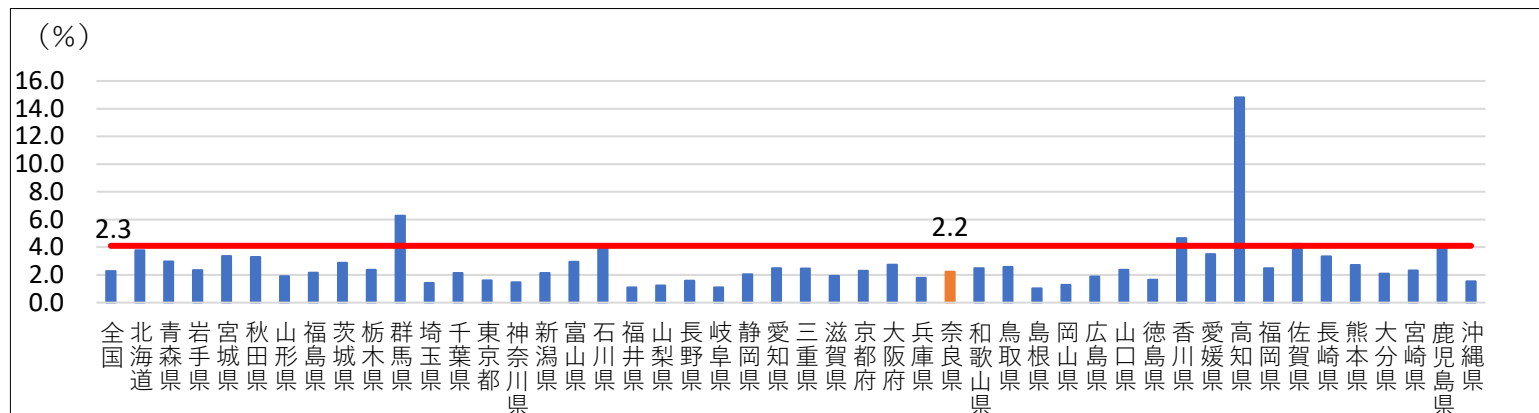
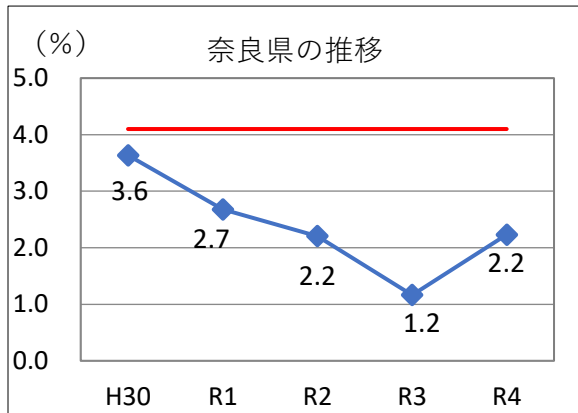
【要精検率（全住民40～74歳）】基準値2.4%以下



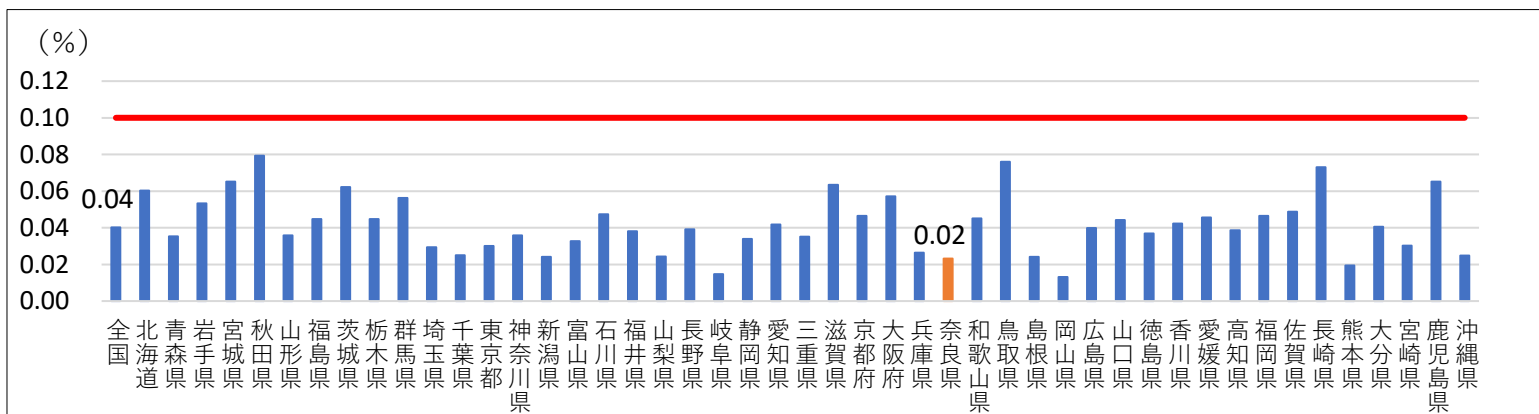
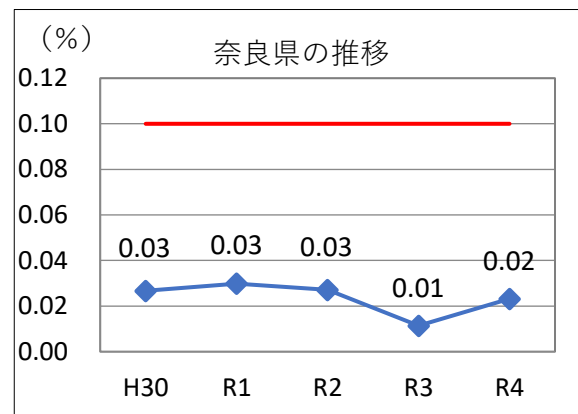
【精検受診率（全住民40～74歳）】基準値90%以上



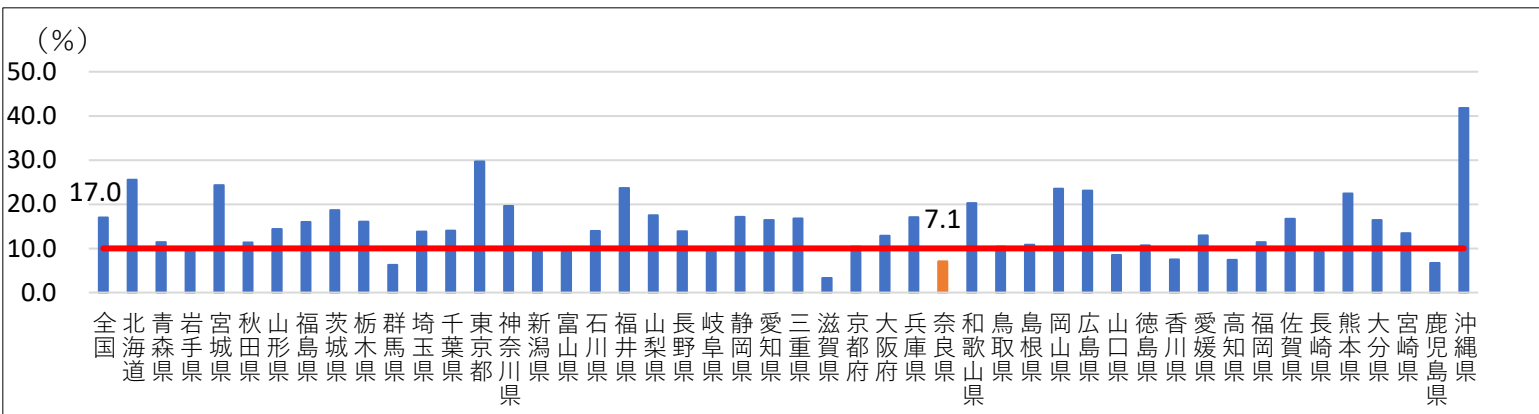
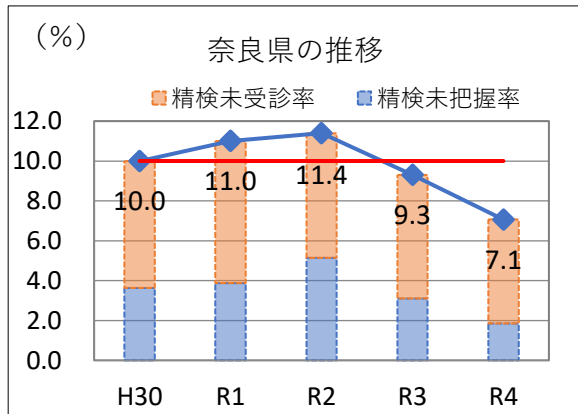
【陽性反応適中度（全住民40～74歳）】基準値4.1%以上



【がん発見率（全住民40～74歳）】基準値0.10%以上

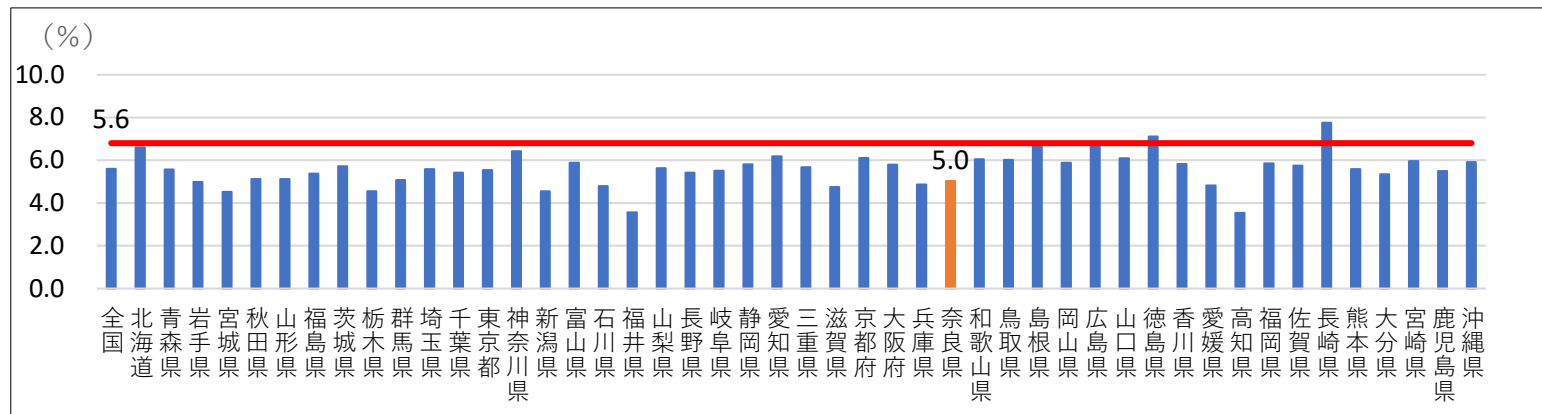
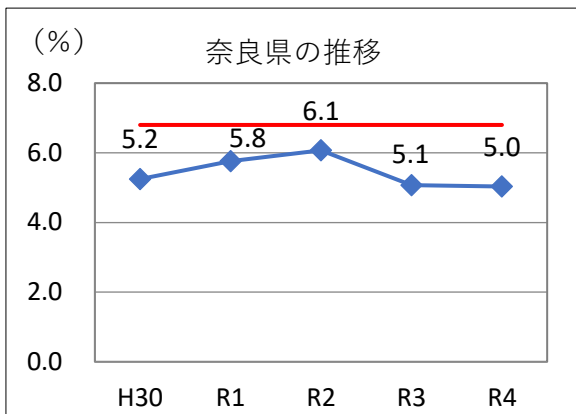


【精検未受診率+精検未把握率（全住民40～74歳）】基準値10%未満

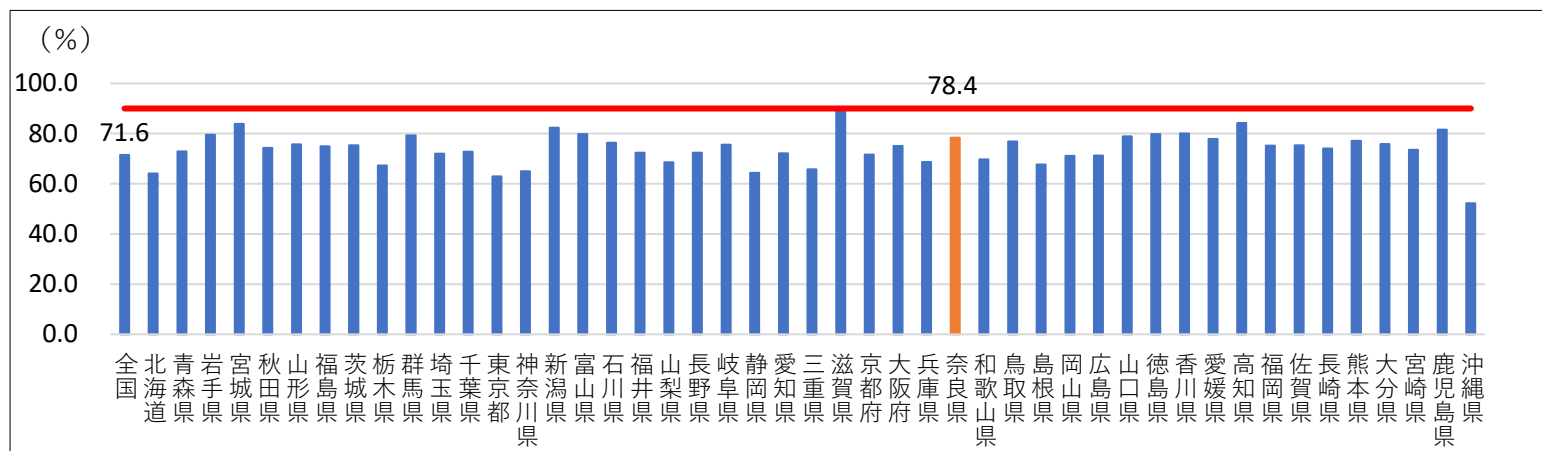
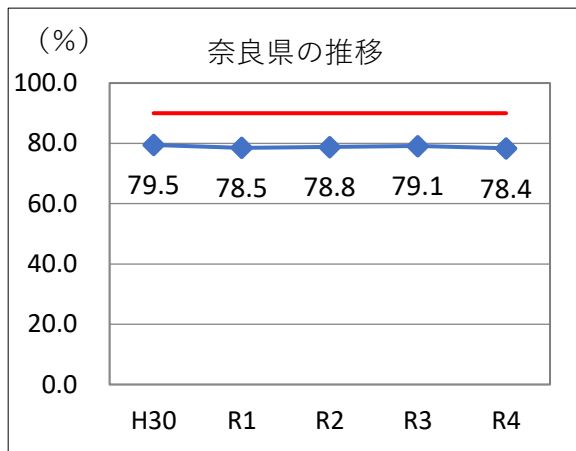


◆大腸プロセス指標

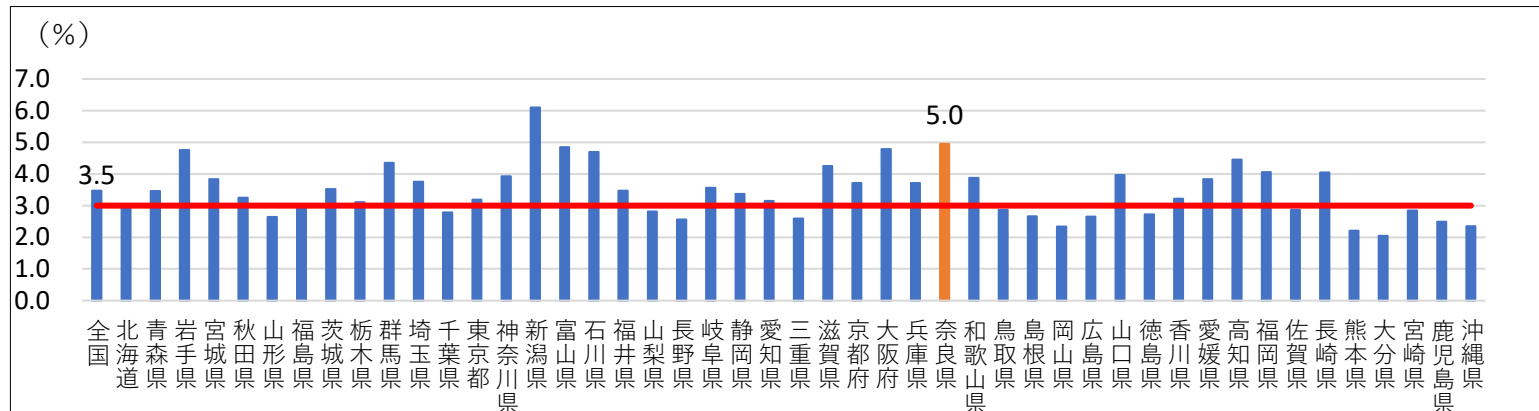
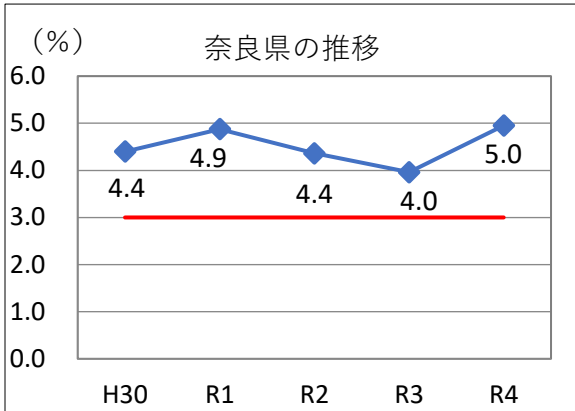
【要精検率（全住民40～74歳）】基準値7.7%以下



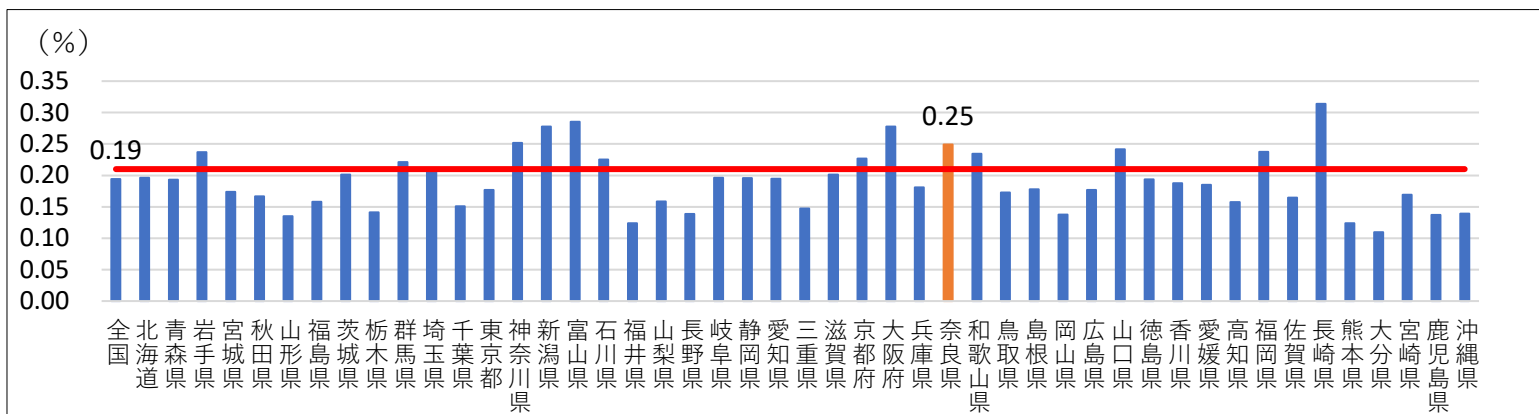
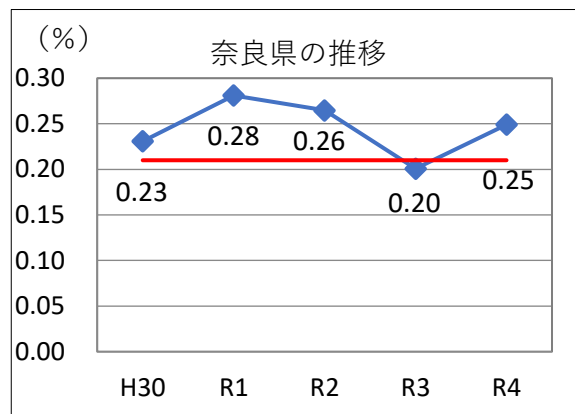
【精検受診率（全住民40～74歳）】基準値90%以上



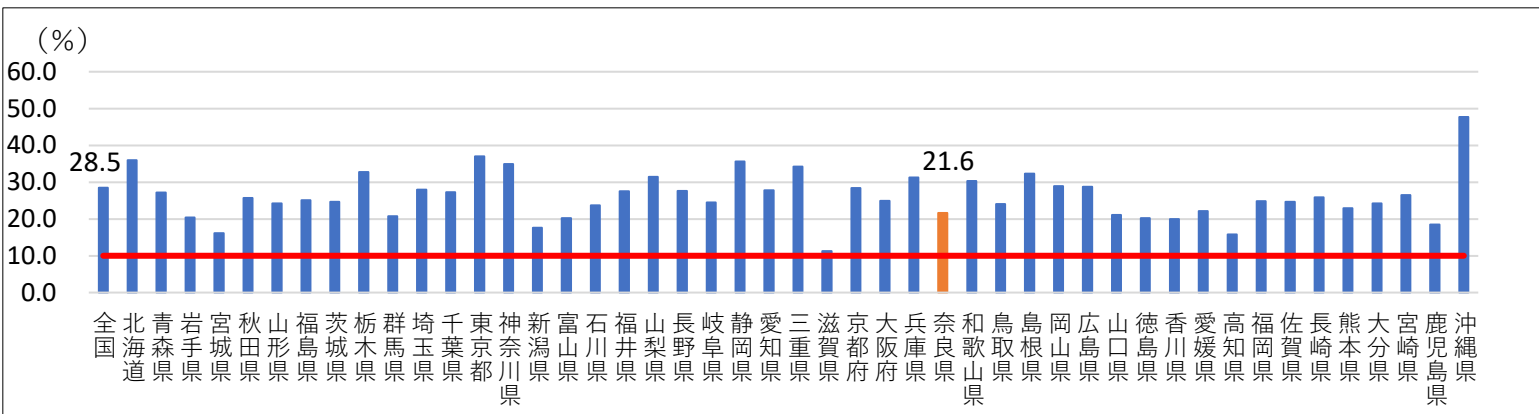
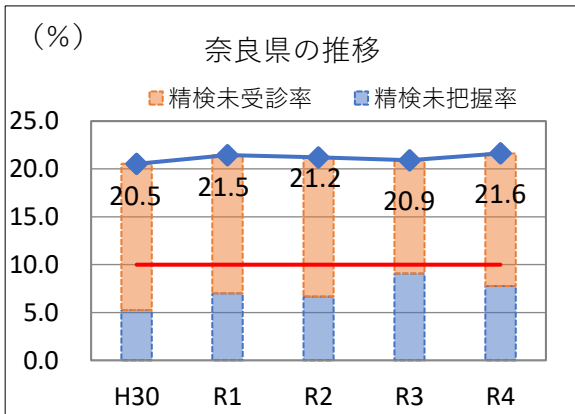
【陽性反応適中度（全住民40～74歳）】基準値2.5%以上



【がん発見率（全住民40～74歳）】基準値0.19%以上

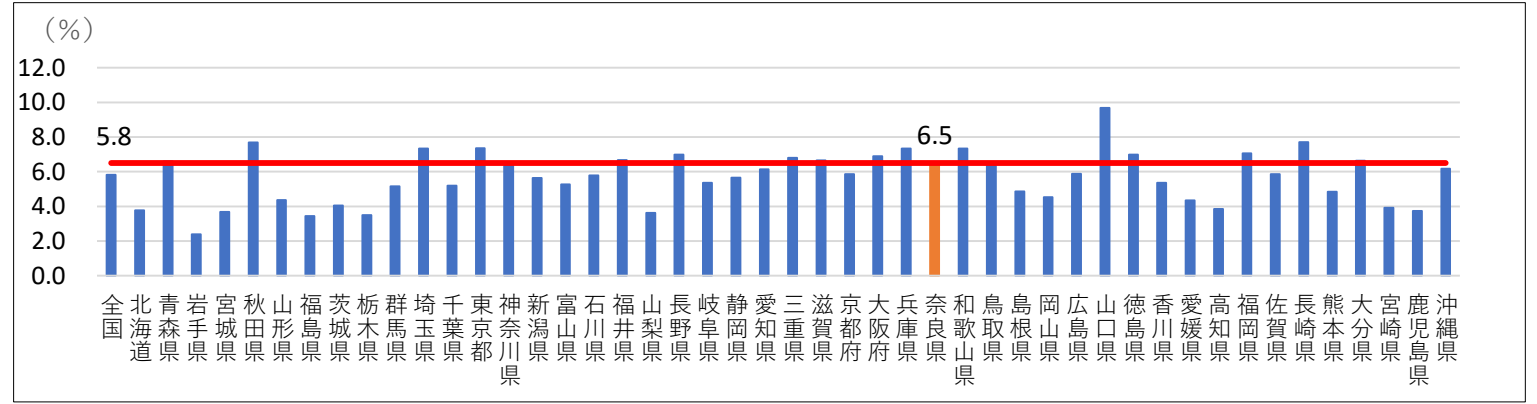
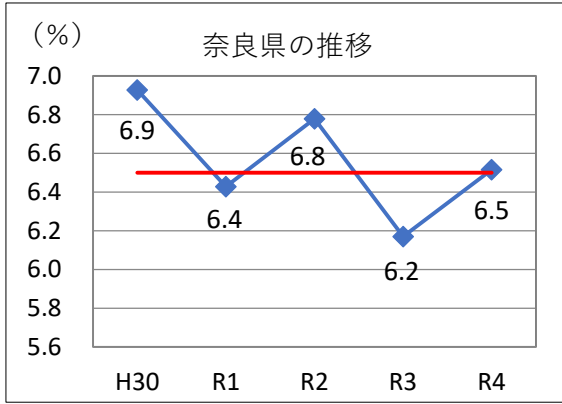


【精検未受診率+精検未把握率（全住民40～74歳）】基準値10%未満

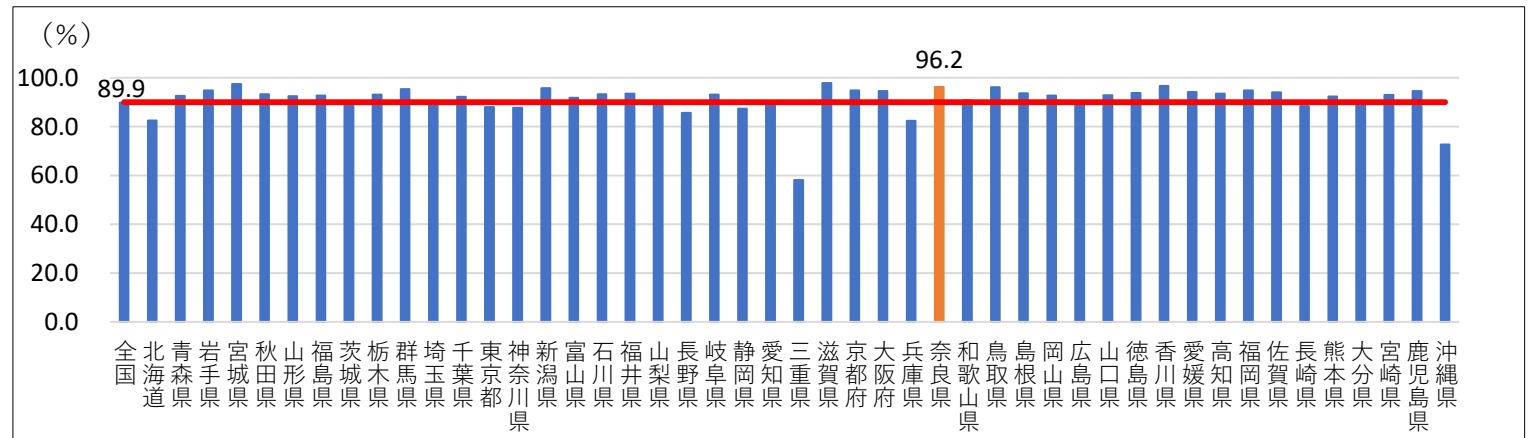
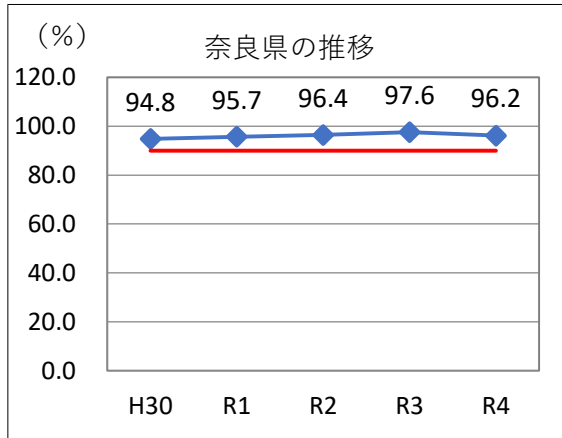


◆乳がん検診プロセス指標

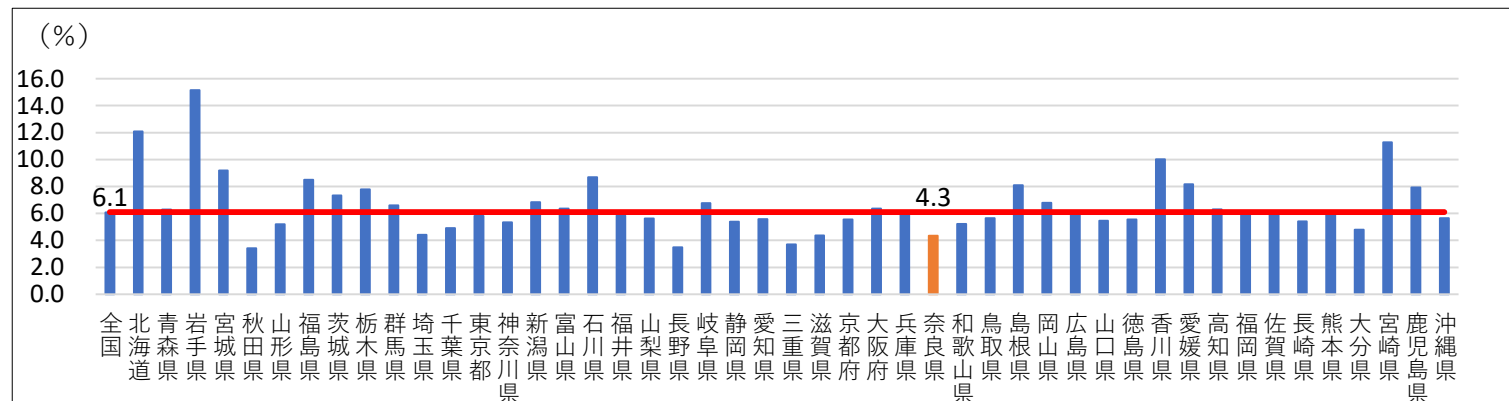
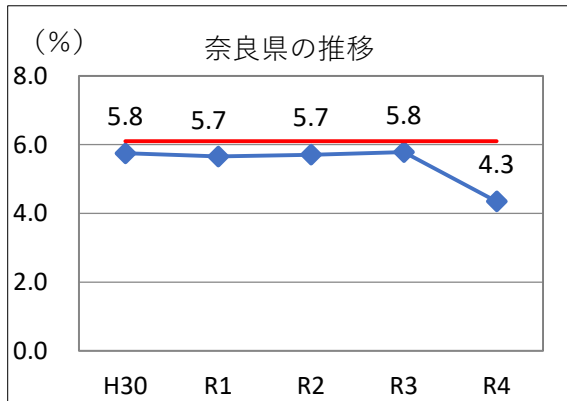
【要精検率（全住民40～74歳）】基準値6.5%以下



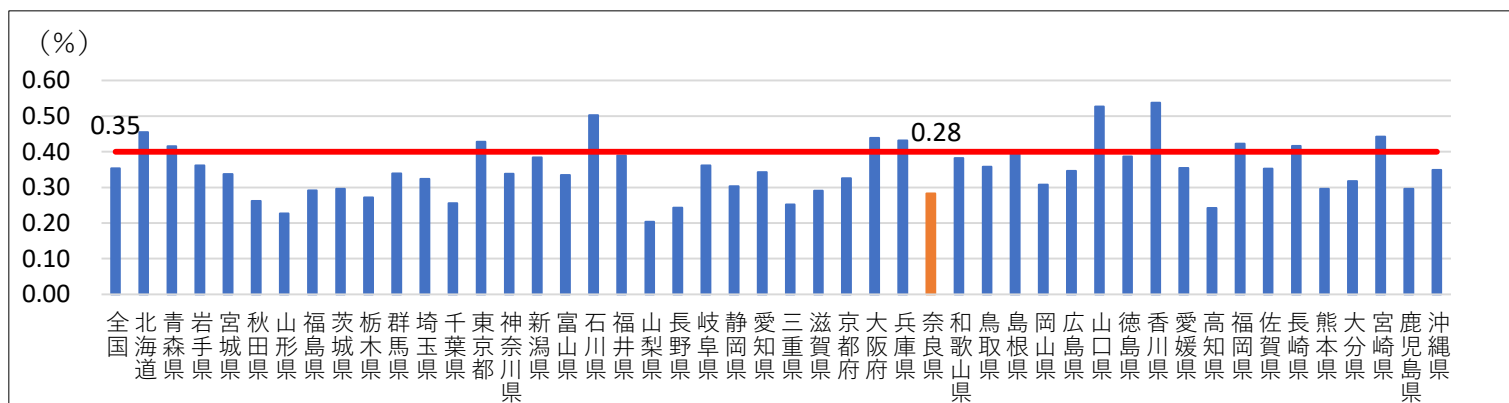
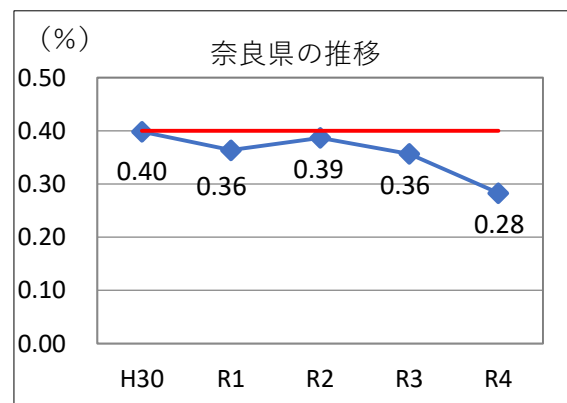
【精検受診率（全住民40～74歳）】基準値90%以上



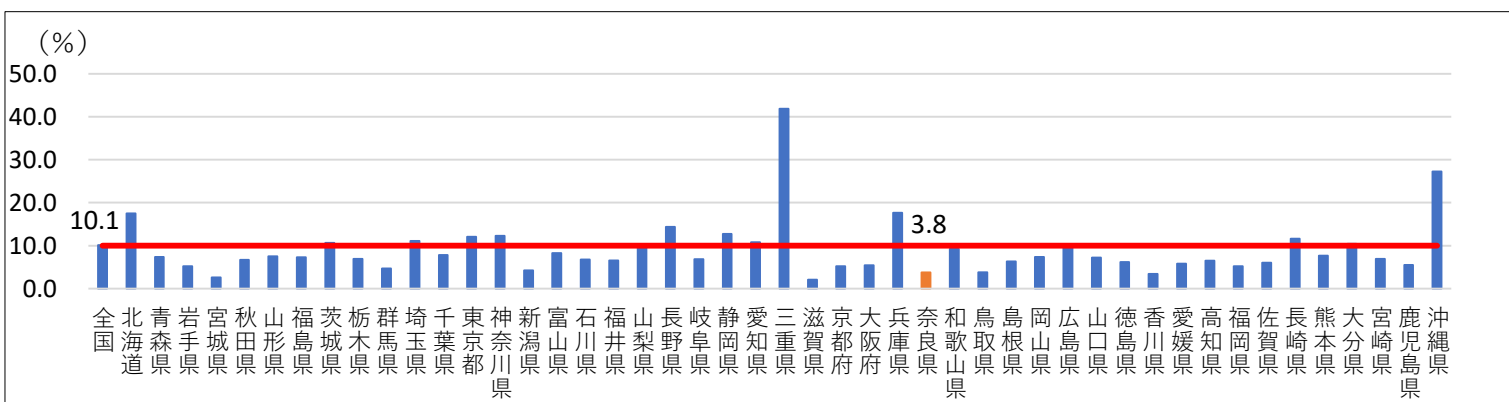
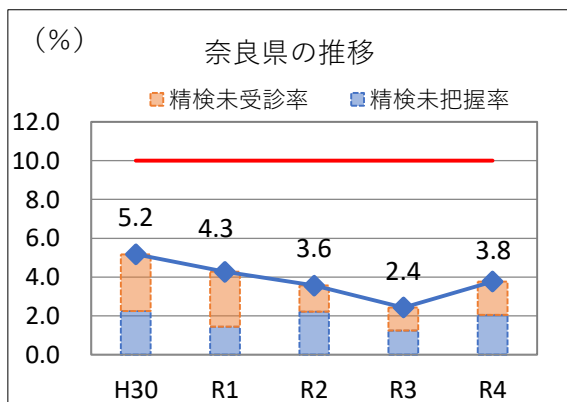
【陽性反応適中度（全住民40～74歳）】基準値6.1%以上



【がん発見率（全住民40～74歳）】基準値0.40%以上

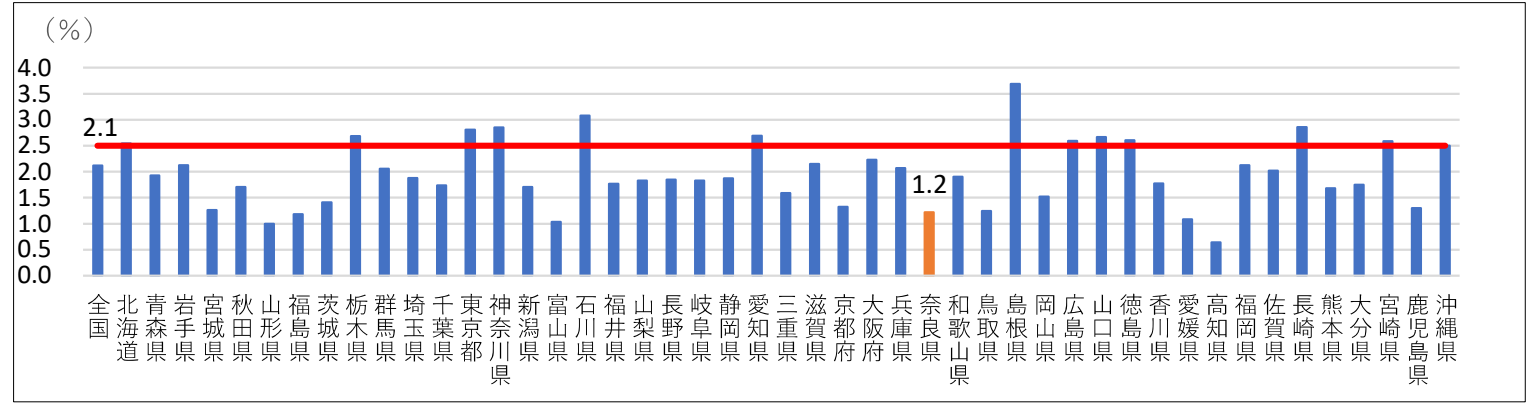
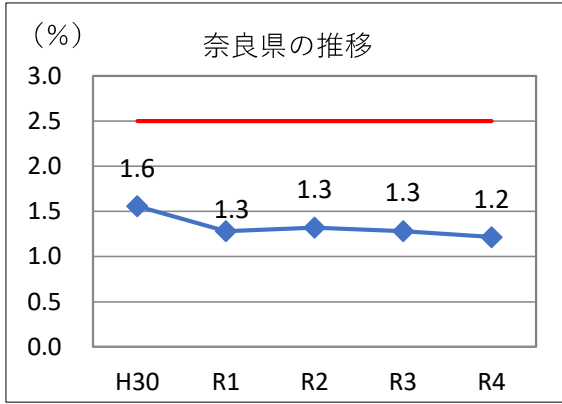


【精検未受診率＋精検未把握率（全住民40～74歳）】基準値10%未満

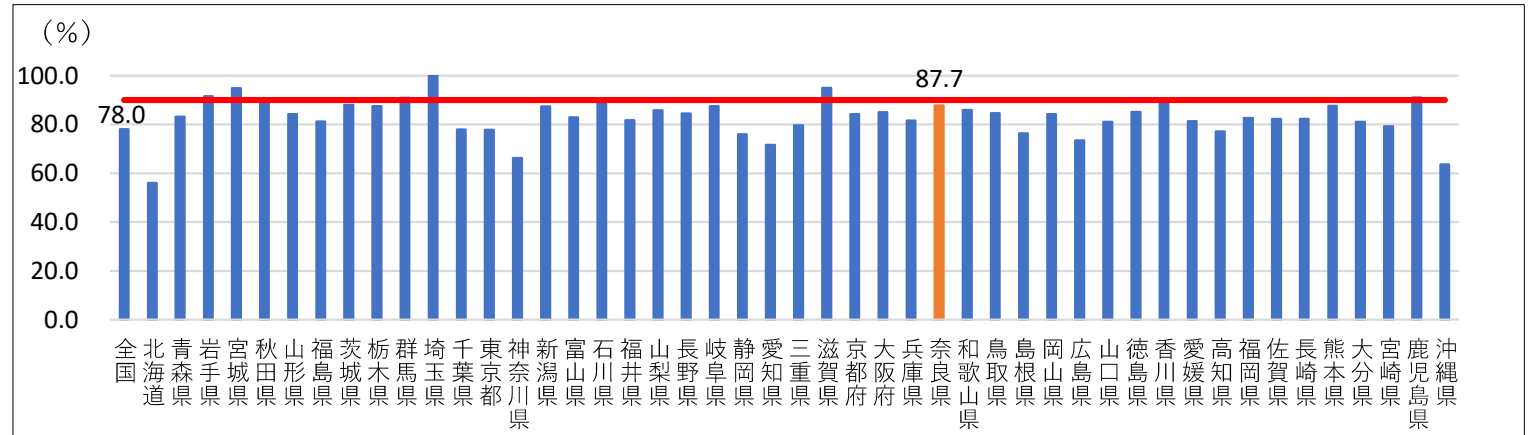
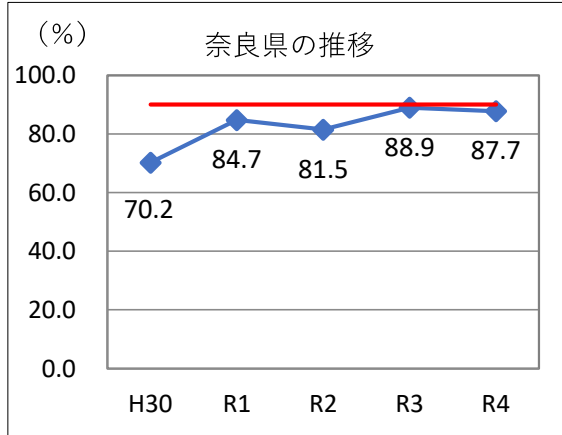


◆子宮頸がん検診プロセス指標

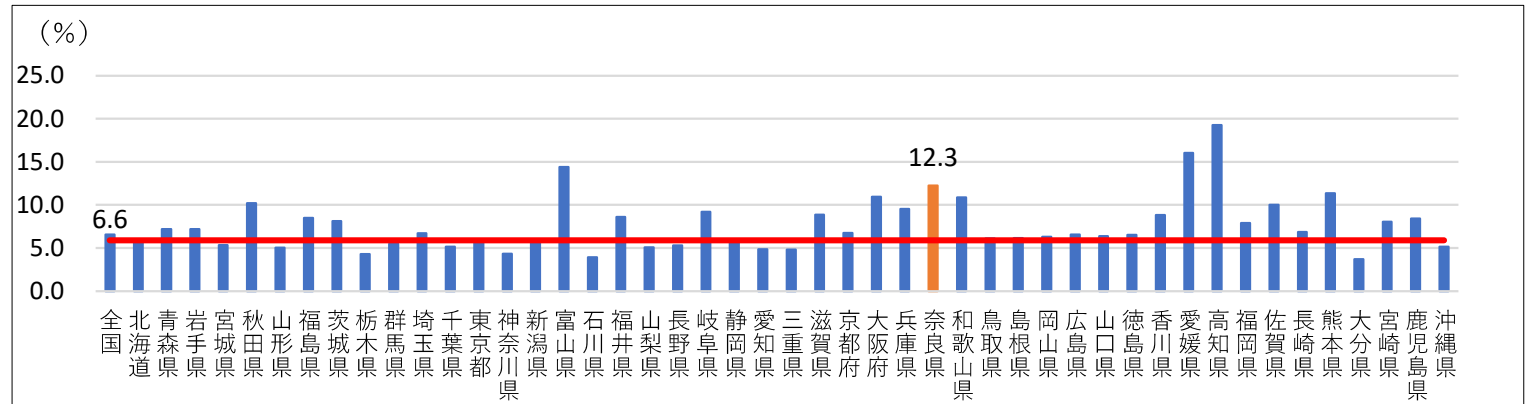
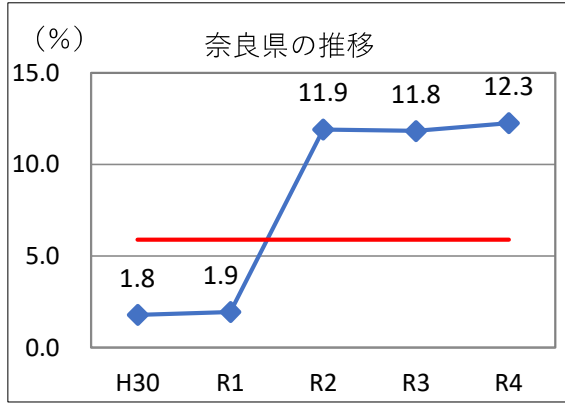
【要精検率（全住民20～74歳）】基準値2.5%以下



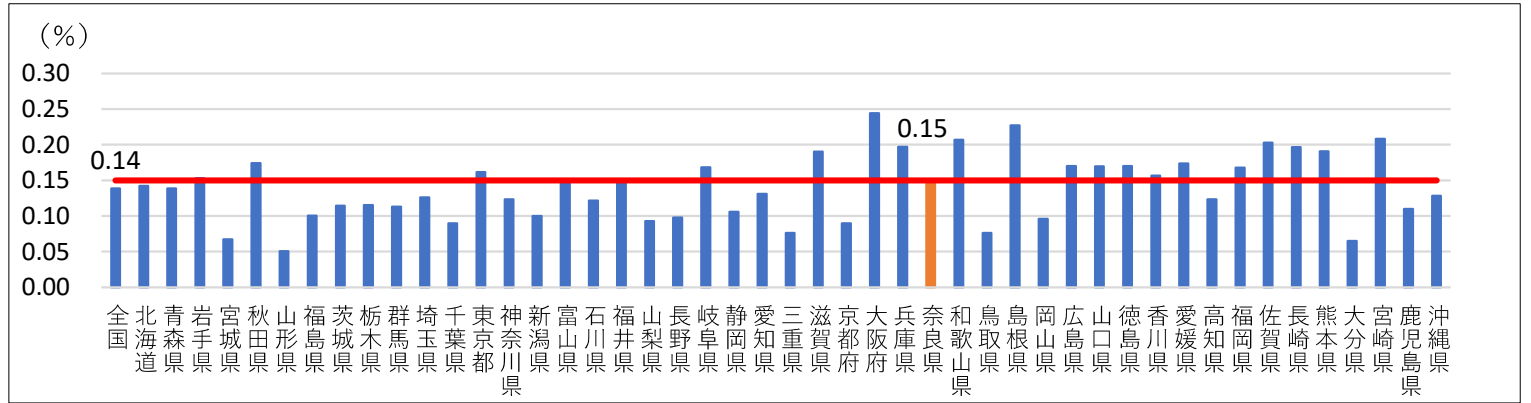
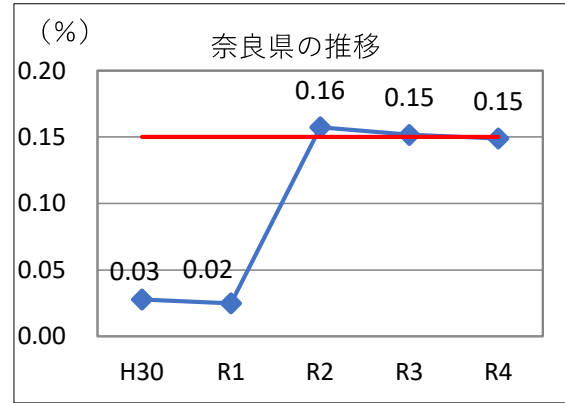
【精検受診率（全住民20～74歳）】基準値90%以上



【CIN3以上の陽性反応適中度（全住民20～74歳）】基準値5.9%以上 ※H30、R1は陽性反応適中度



【CIN3以上発見率（全住民20～74歳）】基準値0.15%以上 ※H30、R1はがん発見率



【精検未受診率＋精検未把握率（全住民20～74歳）】基準値10%未満

